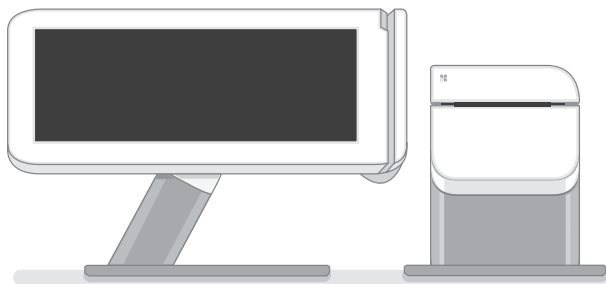




# Clover Station

## Feature Guide



English	1
Deutsch	10
Español	20
Français	30
Italiano	40
Nederlands	50
Polski	60
Português	70

This guide describes  
Clover Station's hardware  
and software features.

We are continuously  
improving our software.  
To see the latest version  
of this guide, visit  
[clover.com/setup](https://clover.com/setup).

In Europe, visit [eu.clover.com/setup](https://eu.clover.com/setup)

## What's included



Clover Station display



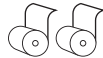
Receipt Printer



Power brick



Deposit bag



Receipt paper x2



Power  
(region specific)



Display



Ethernet

### Optional Accessories



Cash Drawer

(And more: barcode scanner, label printer, kitchen printer)

See complete list: [clover.com/pos-hardware/accessories](https://clover.com/pos-hardware/accessories)

## Get to know your Clover Station

### Views



Merchant Facing



Customer Facing

Rotate the display to switch smoothly between merchant-facing and customer-facing mode.

### Optional Configuration

Clover's hardware design adapts to your needs by offering multiple USB ports for additional configurations.







Clover Mini + Clover Station

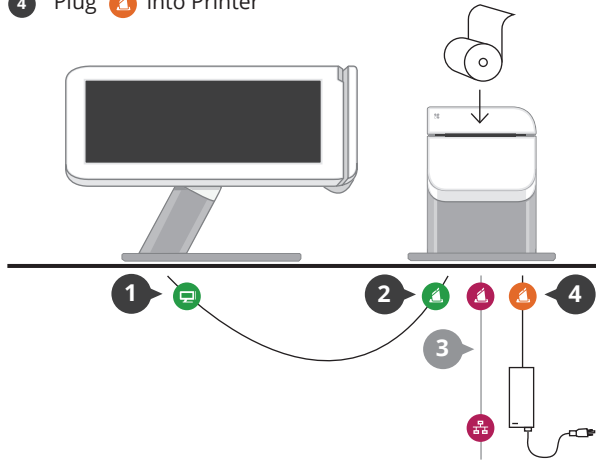
For more details visit [clover.com/setup](https://clover.com/setup).

# Set up your Clover Station

Video set up: [clover.com/setup](https://clover.com/setup)  
Europe: [eu.clover.com/setup](https://eu.clover.com/setup)

Connect the cables to the hardware in this order:

- 1 Plug  into Display
- 2 Plug  into Printer
- 3 Plug  into Printer (optional if using a wireless network)
- 4 Plug  into Printer



# Getting Started



## Setup Wizard

This is your guide for setting up Clover Station. Your activation code is in your welcome email.



## Home

Use your Clover Home screen for quick access to all your Clover apps. Employees can also log in and out from here.



# Applications



## App Market

The power of Clover's system is in the variety of applications available for download to suit your specific needs. We're adding new ones all the time, so be sure to check our App Market periodically.

---



## Register

Ring Up Transactions

Your home base for quickly creating and charging for orders. View all of your items in one place.



## Tables

Full Service Table Management

Full service restaurants: this is your home. Assign tables to servers and manage table ordering, printing, and paying from here.



## Orders

Order Central

Track and find your orders, add tips, and refund payments.



## Customers

Get to know your customers

Quick access to your customers and their latest orders allows you to serve them better.



## Reporting

Analytics in an instant

Reports give you powerful insight into your business. Get instant access to payments, cash logs, and employee sales.

## Useful Resources



### Web Access

#### Manage Your Apps

Some apps allow you to access them via your web browser. We've put shortcuts to these web pages at [clover.com/home](https://clover.com/home).

Please use Chrome, Safari, or Firefox.

In Europe, visit [eu.clover.com/home](https://eu.clover.com/home)



### Need Help?

Visit [help.clover.com](https://help.clover.com), use the Help app, or call us anytime at the phone number given in your welcome email.

